

Accotink Creek runs 26 miles through one of the finest wildlife corridors of Fairfax County.



The Friends of Accotink Creek partner with volunteers, communities, schools, businesses, and government agencies to protect, restore, and improve the Accotink Watershed.

Our motto is "Find just one other person who cares".

I ♥ ACCOTINK CREEK BECAUSE

it is peaceful

♥ its nice and beautiful ♥

It has lots of ^{animals}

Wally the dog ♥'s his
walk in the park!

Baseballs!

THE OWLS!!!

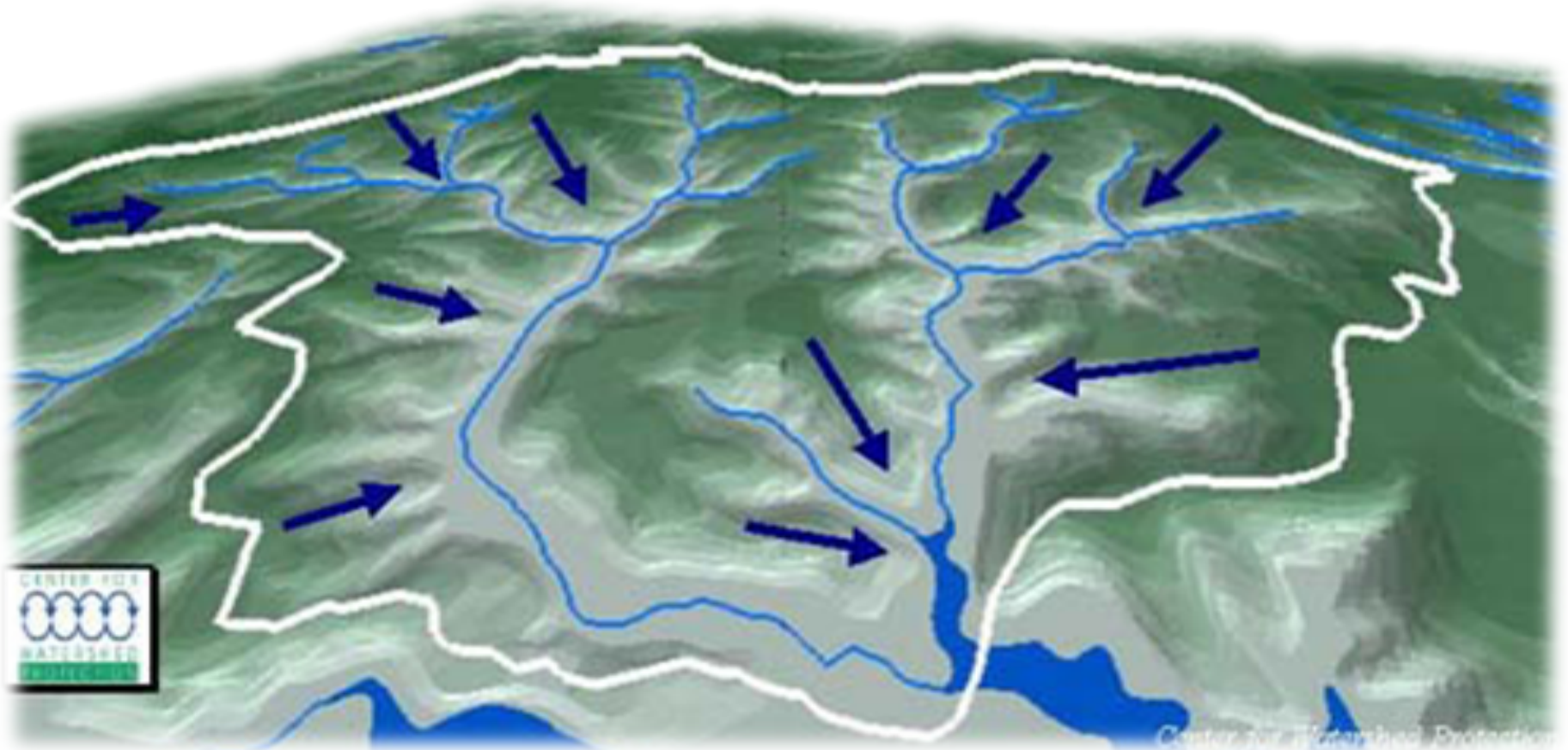
The spring peepers
+ wood thrushes

Frogs!

We had fun!! We found a shoe!

DEFINING A WATERSHED

- A watershed is an area of land where all streams and rainfall drain to a common outlet



Accotink Creek Watershed



Fairfax County Watersheds



Potomac River Watershed



Chesapeake Bay Watershed



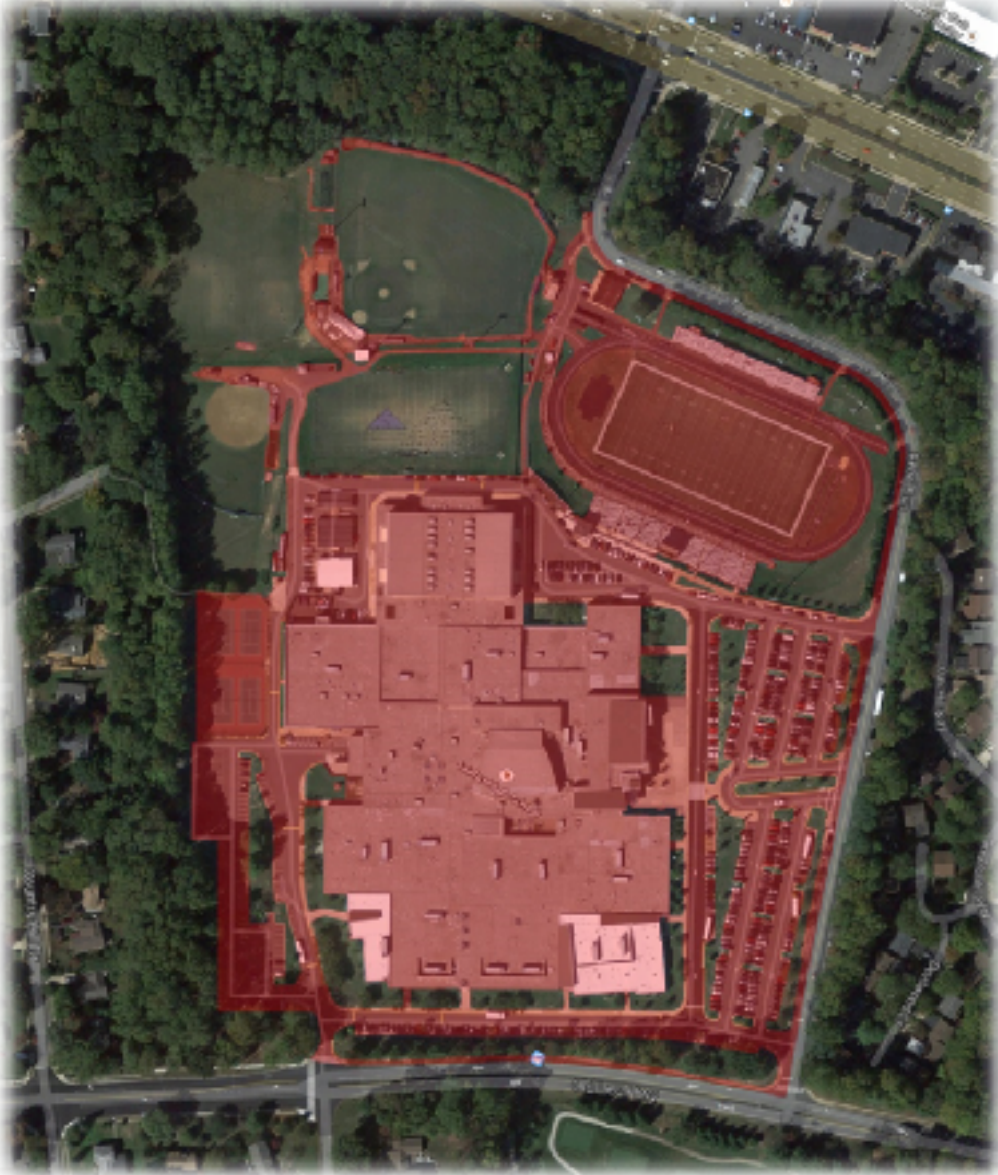


Impervious surfaces in the watershed:
roads, parking lots, and buildings.

When it rains, the water flows quickly
off these surfaces into Accotink Creek.
This stormwater is moving so quickly
that it erodes the stream banks, adding
sediment to the stream.



FAIRFAX HIGH SCHOOL



Taking a closer look at your school grounds....

40.7 acres in total

15.7 acres are Pervious (37%)

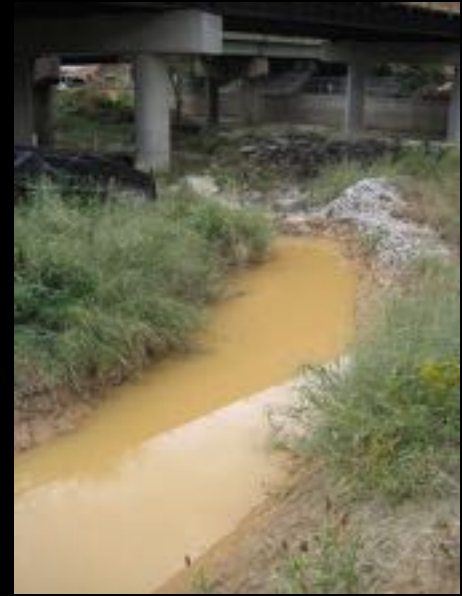
25 acres are Impervious (63%)





Too much sediment in Accotink Creek can be a bad thing. Fish and insects that live in Accotink creek have a hard time surviving when the water is too silty.

Polluted water is as bad for them as polluted air is for us.



Trash dropped anywhere in the watershed, often ends up in Accotink Creek.

On our cleanups, we find styrofoam, plastic bags, water bottles, drink cans, shopping carts, shoes, toys, fishing line, tires, scrap metal, clothes, and more!



Trash from the Accotink Watershed flows downstream to the Potomac River, the Chesapeake Bay, and then the Atlantic, eventually accumulating in the North Atlantic Trash Gyre.



This is one of five places in the oceans with large amounts of garbage, which is unhealthy for the fish and other organisms that live there.

HOW LONG UNTIL IT'S GONE?

Estimated decomposition rates of common marine debris items



Estimated individual item timelines depend on product composition and environmental conditions.

Source: NOAA National Oceanic and Atmospheric Administration, US / Woods Hole Sea Grant, US
Graphics: Oliver Luder / Museum für Gestaltung Zurich, Zink



MORE OCEAN
LESS PLASTIC
THE GYRES INSTITUTE



MORE OCEAN
LESS PLASTIC
THE GYRES INSTITUTE















Join the Friends of Accotink Creek for the 2018 Potomac Watershed Cleanup!



All are welcome! Schools, neighbors, places of worship, community groups, HOAs, businesses - Bring your friends and family!

April 21, 2018

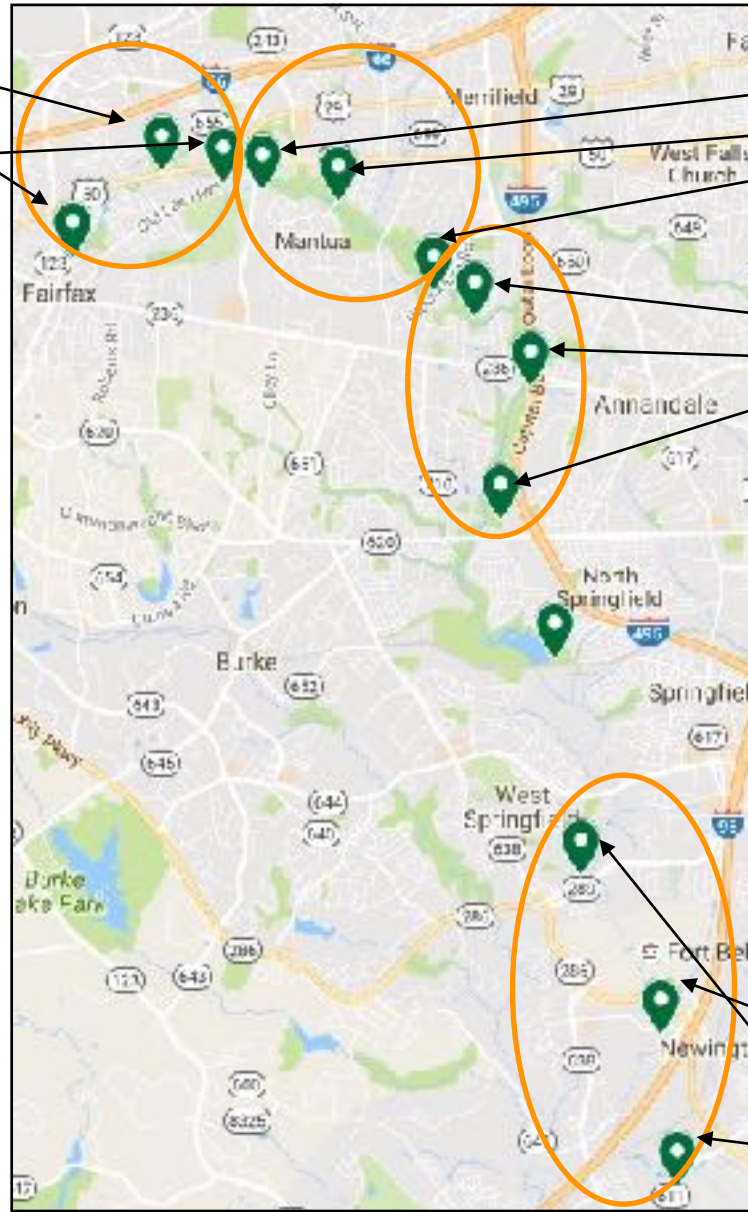
- 9am - 11am: Fairfax Blvd bridge
- 12pm - 2pm : Chain Bridge Rd
- 3pm - 5pm : Old Lee Hwy bridge

April 28, 2018

- 9am - 11am: Pickett Road bridge
- 12pm - 2pm: Barkley Drive bridge
- 3pm - 5pm: Woodburn Road bridge

May 12, 2018

- 9am - 11am: King Arthur Rd bridge
- 12pm - 2pm : Americana Park
- 3pm - 5pm : Wakefield Park



April 14, 2018

- 9am - 11 am : Accotink Gorge/Fullerton Rd
- 12pm - 2pm - Franconia-Springfield Pkwy (Including cleanup of Hooes Rd dumpsite)
- 3pm - 5pm - Telegraph Road bridge

The **Friends of Accotink Creek** is a non-profit organization dedicated to restoring, promoting, and protecting the Accotink Creek watershed. Each year, hundreds of volunteers join Team Accotink spring and fall cleanups at 12 sites to get the trash out of our watershed!

We also lead and support watershed-related initiatives including school programs, stream monitoring and restoration, invasive plants, stormwater issues, native habitats, stream cleanups and community outreach. Join us - we can use your help!

www.accotink.org
[Meetup.com/accotink/](https://www.meetup.com/accotink/)
[Facebook.com/AccotinkCreek](https://www.facebook.com/AccotinkCreek)
 or contact@accotink.org

Trash Day of Action! March to the River! May 5, 2018

The Friends of Accotink Creek are part of the **Trash Action Work Force**, dedicated to ending plastic pollution in our communities, watersheds, and oceans! Join us in Alexandria, at the HQ of the International Bottled Water Association! [Meetup.com/Accotink/events/248326363/](https://www.meetup.com/Accotink/events/248326363/)



















DANCEFIELD RD

DANCEFIELD RD

Bottled Water Assoc.
Clean up your
Plastic Trash

WATERPLATE
REUSABLE

Hey Hey
Aww
Single Use
Bottles
are still bad!

IBWA
Don't just
Trash
GO AWAY

STOP
PLASTIC
LITTER

Loving the Planet
the responsible
Zero Waste
Lifestyle

I ♡
Clean Streams









SAY NO TO BOTTLED WATER

Don't Bottled Water As In Your Country



I'm Not Responsible

WHY CALX WITH DASH?

WHERE'S THE WATER BOTTLE DEPOSIT?

FREE















Watch out for Poison Ivy!



These are not Poison Ivy!

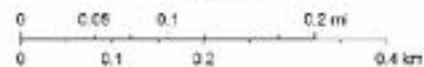


Historic Imagery Viewer



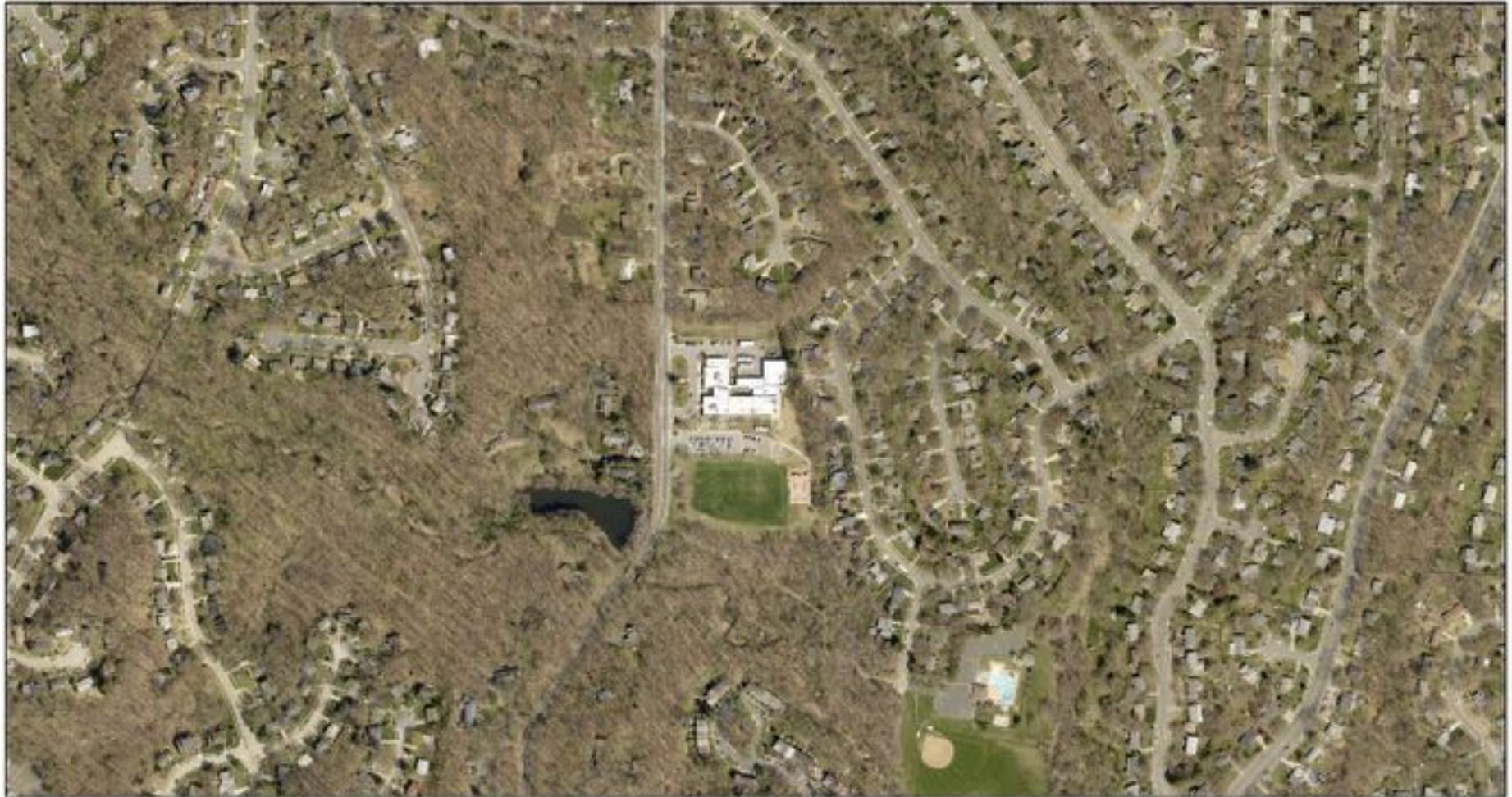
June 5, 2016

1:5,005



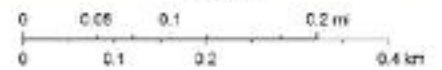
Sources: Esri, HERE, DeLorme, Intermap, Inverness P. Corp., GEBCO, USGS, FAO, NPS, NRCAN, GeBCAS, IGN, IGN, Esri, Swisstopo, Esri, Japan, METI, Esri China (Hong Kong), Swisstopo, Mapbox, © OpenStreetMap contributors, and the GIS User Community

Historic Imagery Viewer



June 5, 2016

1:5,000



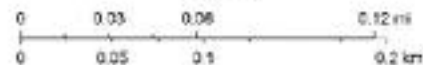
Source: Esri, HERE, DeLorme, Intermap, Invertek P Corp., GEBCO, USGS, FAO, NPS, NRCAN, GeBCO, IGN, NASA, NGA, Ordnance Survey, Esri Japan, METI, Esri China (Hong Kong), Swisstopo, Mapbox Labs, O-CyberLink, and the GIS User Community

Historic Imagery Viewer



June 5, 2016

1:2,503



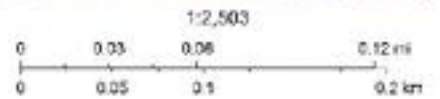
Source: Esri, HERE, DeLorme, Intermap, InvenSense, Swire, GEBCO, USGS, FAO, NPS, NRCAN, GEBCO, IGN, Esri, Ordnance Survey, Esri Japan, METI, Esri China (Hong Kong), Swire, Mapbox, © OpenStreetMap contributors, and the GIS User Community

Esri, HERE, DeLorme, FAO, IGN, Esri, Ordnance Survey, Esri Japan, METI, Esri China (Hong Kong), Swire, Mapbox, © OpenStreetMap contributors, and the GIS User Community

Historic Imagery Viewer



June 5, 2016



Sources: Esri, HERE, DeLorme, Intermap, InvenSense, Bing, AeroGRID, IGN, Esri, Swire, GEBCO, USGS, FAO, NPS, NRCAN, GEBCO, IGN, Esri, Swire, Ordnance Survey, Esri, Jazari, METI, Esri, China (Hong Kong), Swire, Mapbox, © OpenStreetMap contributors, and the GIS User Community

Little Run Elementary School

